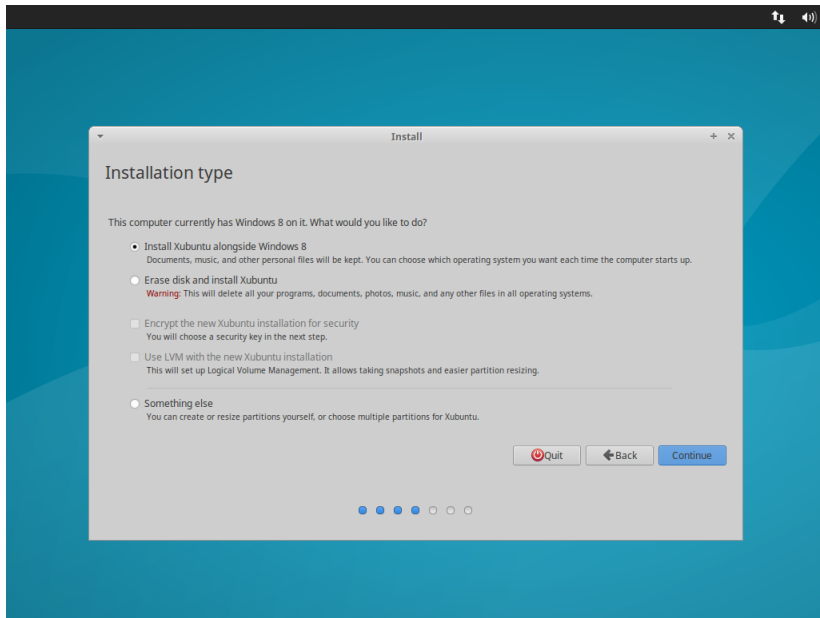


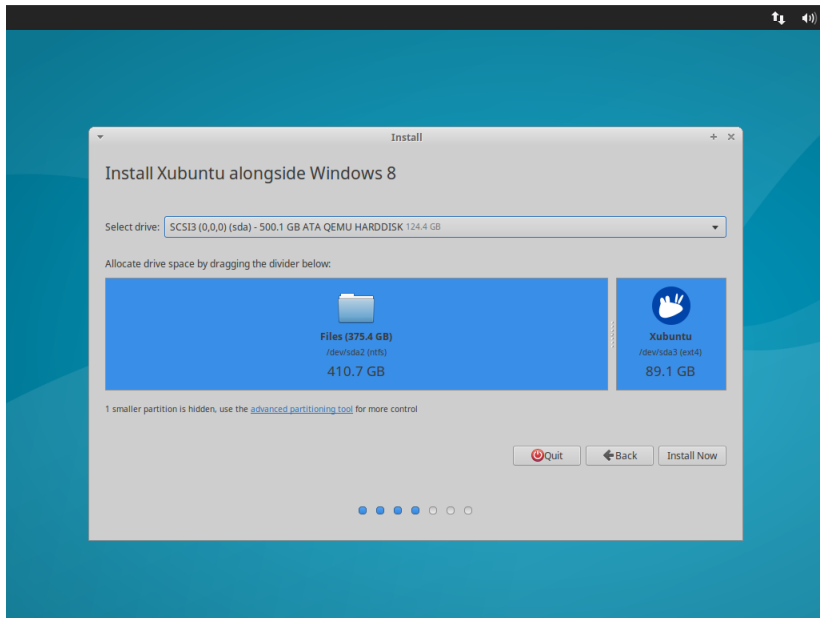
Linux For Beginners

April 26, 2016

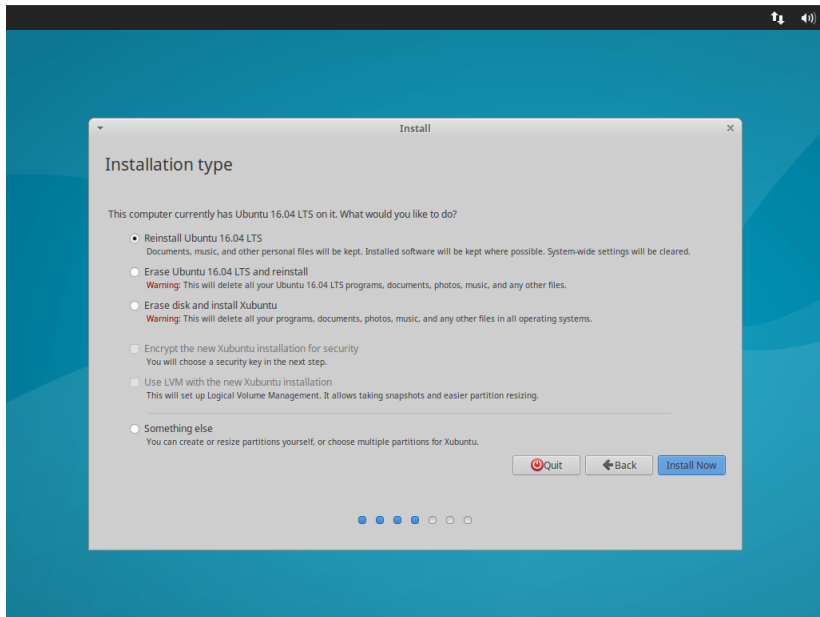
Dualboot Linux and Windows



Dualboot Linux and Windows



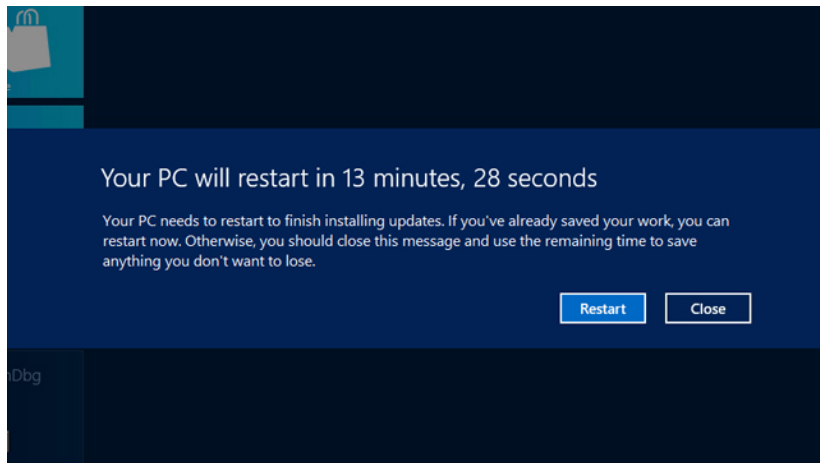
Reinstall usually keeps personal files



Advantages of Linux

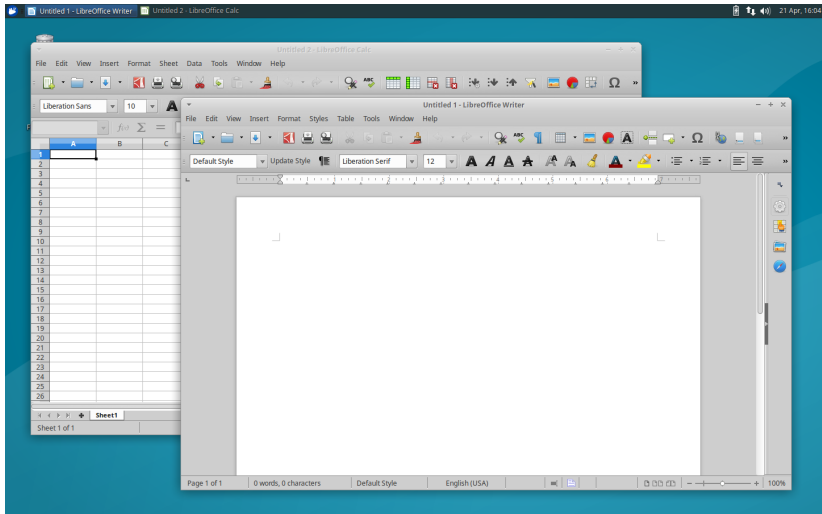
- ▶ More secure
- ▶ Package manager
 - ▶ Software installation is easy, fast and secure
 - ▶ Keeps all software up to date
- ▶ Faster, uses less resources
- ▶ Very customizable
- ▶ Better development environment
- ▶ Gratis
- ▶ Only does what you tell it to do

Windows Bullshit



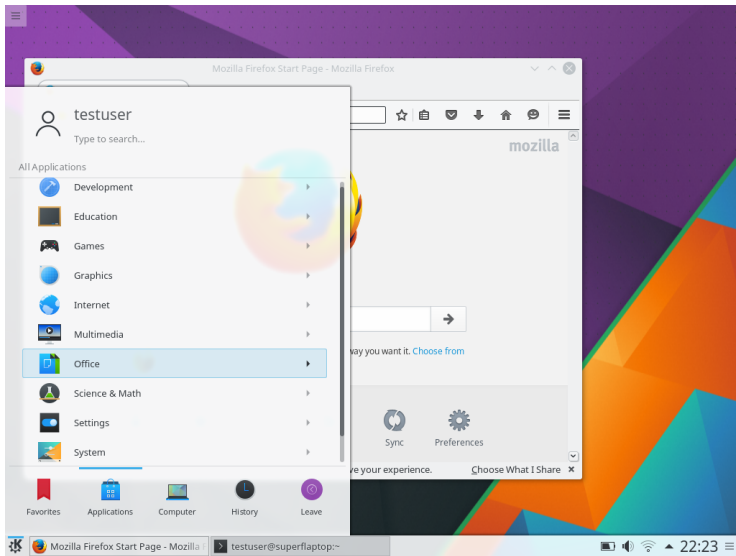
Xfce

- ▶ Light & low resource usage
- ▶ Simple
- ▶ Few to no effects

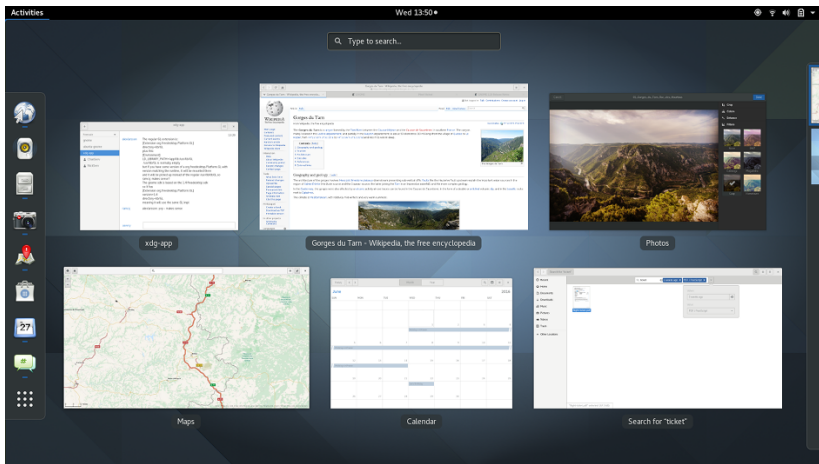


KDE

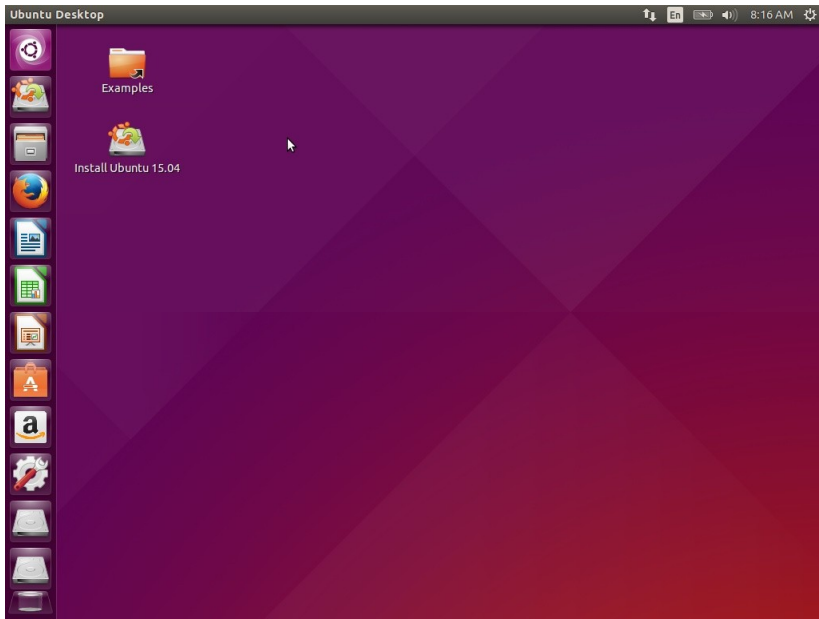
- ▶ Visually very fancy
- ▶ Relatively high resource usage



► Somewhere in the middle



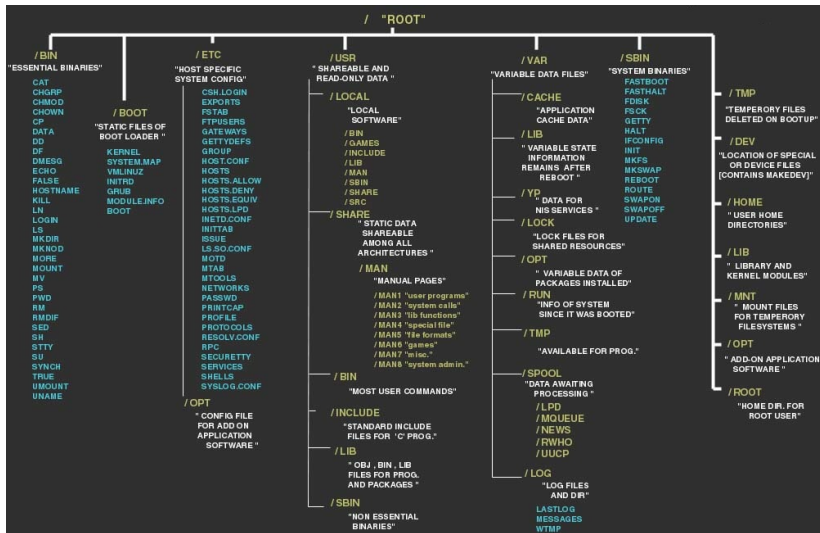
► Default for Ubuntu



Linux Distributions (Distro)

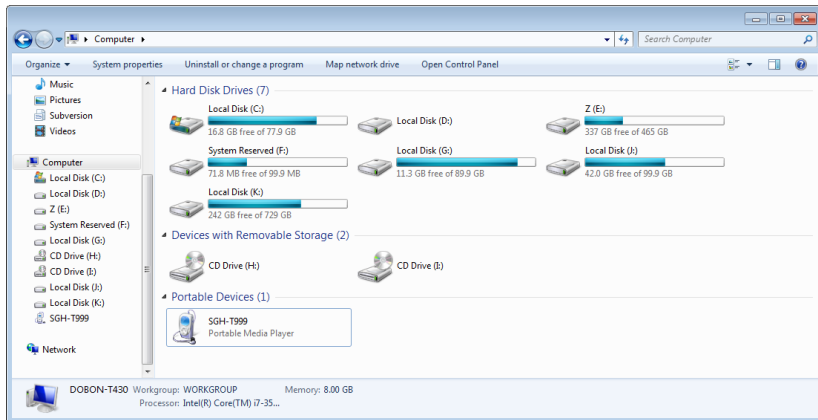


Filesystem Hierarchy Standard



Filesystem: Windows

► Drive letters



Filesystem: Unix

► Mount points

